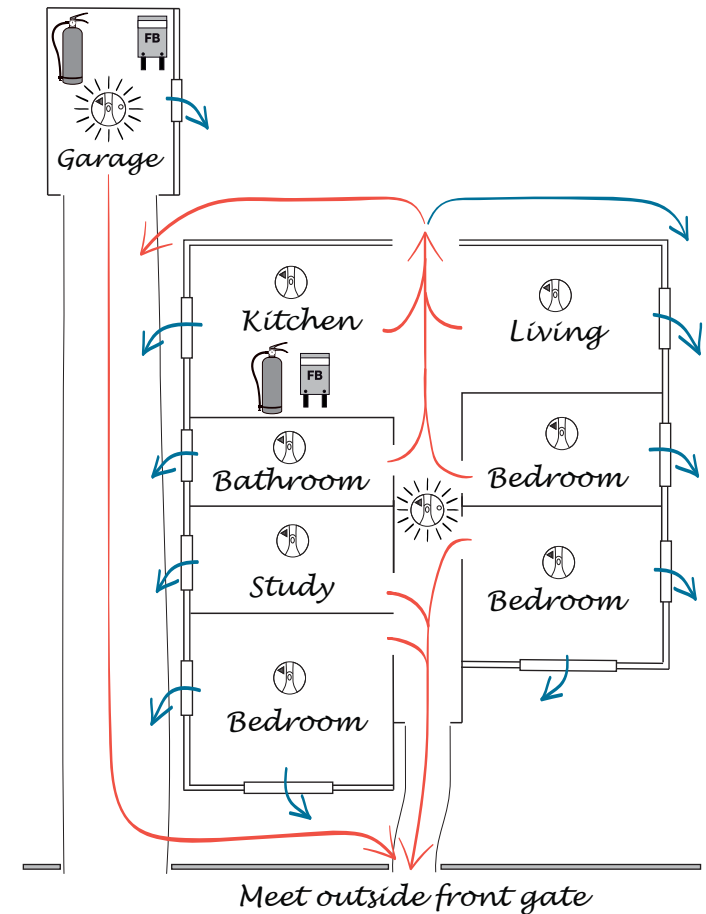
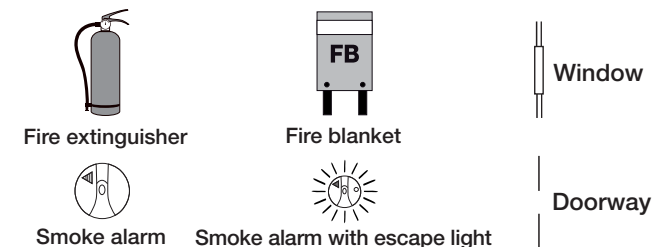


How to create your Fire Escape Plan and be prepared for emergencies

1. Use the grid on the next page to draw the floorplan of your home and outdoor areas (e.g. garage). Include all your fire safety products. Do you have enough?
2. Draw two exits paths from each area (as shown in the example right). You can use a **RED** pen to mark the **QUICKEST** exist paths from each area, and a **BLUE** pen to mark the **SECOND-QUICKEST** as an alternative.
3. Rehearse your Fire Escape Plan at least 3-4 times per year with all household members and make sure **ALL** escape paths are always clear and ready. Place this completed plan in an open common area within your home, such as on a wall in the kitchen, and create copies for everyone. During rehearsals, discuss alternative meeting points should the designated one be unsafe to reach.




THIS IS AN EXAMPLE FIRE ESCAPE PLAN



Protect your
**Family
First**

Fire Escape Plan

For more information
about fire safety visit
www.family-first.com.au

A large grid of graph paper, consisting of 30 columns and 30 rows of small squares, intended for drawing a fire escape plan.