

# Protect your Family First®

FFPDCH10Y

PHOTOELECTRIC SMOKE ALARM WITH  
10 YEAR LITHIUM BATTERY  
TEST & HUSH BUTTON



Certified Product  
Australian Standard  
AS3786:2014  
Lic SMKH25550  
SAI Global

## SPECIFICATIONS:

Detection Type:	
Photoelectric Chamber	
Power Source:	
Built-in DC3V (CR123A) Lithium battery (Non-replaceable battery)	
Standby Current	<8uA
Alarm Current	<70mA
Alarm Sound Level	>85dB at 3 metres
Alarm Sensitivity	0.09 - 0.15dB/m
Hush Time	Approx. 10 mins
Operation Temperature	5°C to 45°C
Ambient Humidity	up to 85%
Sound Pattern:	
ISO8201 (B10.5s - pause 0.5s - BI 0.5s - pause 0.5s - BI 0.5s - pause 1.5s, with the red LED flash, repeat this alarm pattern).	
Compliance Standard	AS3786:2014

The unit is a photoelectric 3V DC smoke alarm. Photoelectric technology is more sensitive to detecting slow smouldering fires which are generally thick with black smoke, little heat and may smoulder for hours before bursting into flames. This smoke alarm does not contain radioactive material.

**IMPORTANT:** This manual contains important information about the installation and operation of your smoke alarm. Please read carefully before installation and keep for future reference. Please ensure that this leaflet remains in the household where the alarm is installed.

**WARNING:** This smoke alarm is designed to alert you to the presence of smoke. It cannot prevent a fire. There are hazards against which smoke alarms may not be effective such as smoking in bed, explosions, etc. The ultimate responsibility for fire protection rests with you. This responsibility includes escape planning, safety checks and an effective warning system. In case of fire, a well placed, properly looked after smoke alarm may provide a few seconds so that you can escape and call the fire brigade.

## IMPORTANT SAFETY INFORMATION

1. This smoke alarm has an inbuilt Lithium battery that does not require servicing or changing. This battery is a 10 year maintenance free battery that is not accessible to the user. This battery must be operational to operate the alarm correctly. To test the battery press the test button on this smoke alarm.

2. **DO NOT** connect this smoke alarm to any other type of smoke alarm. The test button accurately tests all smoke alarm functions.

3. The Test button accurately tests all smoke alarm functions. **DO NOT** use any other test method. Test smoke alarm weekly to ensure proper operation.

4. **DO NOT** remove or disconnect battery to silence unwanted alarms. This will remove your protection. Use the Hush Feature, open windows or ventilate the smoke alarm to silence it.

5. This smoke alarm may be installed by a licensed, qualified electrician or a competent individual. Observe and follow all local and national electrical and building codes for installation.

6. This smoke alarm is designed to be used inside a single unit dwelling only. In buildings with several dwellings, each individual living unit should have its own smoke alarms. **DO NOT** install in non-residential buildings. This smoke alarm is not a substitute for a complete alarm system.

7. Install a smoke alarm in every room and on every level of the home. Smoke may not reach the smoke alarm for many reasons. For example, if a fire starts in a remote part of the home, on another level, in a chimney, wall, roof or on the other side of a closed door. Smoke may not reach the smoke alarm in time to alert household members. A smoke alarm will not promptly detect a fire except in the area or room in which it is installed.

8. Smoke alarms may not alert every household member every time. The alarm sound is loud in order to alert individuals to a potential danger. However, there may be limiting circumstances where a household member may not hear the alarm (i.e. outdoor or indoor noise, sound sleepers, drug or alcohol usage, hard of hearing, etc.). If you suspect that this smoke alarm may not alert household members, install and maintain specialty alarms. Household members must hear the alarm's warning sound and respond, to quickly reduce the risk of damage, injury or death that may result from fire. If a household member is hearing impaired, install special smoke alarms with lights or vibrating devices to alert occupants.

9. Smoke alarms can only sound their alarms when they detect smoke. Smoke alarms detect combustion particles in the air. They do not sense heat, flame or gas. This smoke alarm is designed to give an audible warning of a developing fire. However, many fires are fast burning, explosive or intentional. Others are caused by carelessness or safety hazards. Smoke may not reach the smoke alarm quickly enough to ensure safe escape.

10. Smoke alarms have limitations. This smoke alarm is not foolproof and is not warranted to protect lives or property from fire. Smoke alarms are not a substitute for insurance. Homeowners and renters should insure their lives and property. In addition, it is possible for the smoke alarm to fail at any time. For this reason, you must test the smoke alarm weekly and replace every 10 years.

**NOTE:** For best protection, we recommend that you install a smoke alarm in every room.

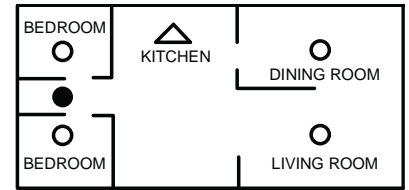
## WHERE TO INSTALL YOUR ALARM

For best safety, install smoke alarms in every room: Including hallways, bedrooms, living rooms, attics & basement. At the very least, one smoke alarm on every floor.

## SMOKE ALARM PLACEMENT

### Typical single-storey home

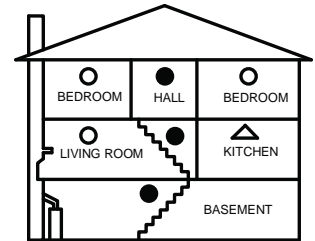
Install a smoke alarm on the ceiling or wall inside each bedroom and in the hallway outside each separate sleeping area. If a bedroom area or hallway is more than 9 metres (30 feet) long, install a smoke alarm at each end. If there is a basement, install a smoke alarm on the basement ceiling at the bottom of the stairwell.



SINGLE-STOREY RESIDENCE, APARTMENT, MOBILE HOME

### Typical Multi-storey or split level home

Install a smoke alarm on the ceiling or wall inside each bedroom and in the hallway outside each separate sleeping area. If a bedroom area or hallway is more than 9 metres (30ft) long, install a smoke alarm at each end. Please install a smoke alarm on the top of a first-to-second floor stairwell.



MULTI-STOREY RESIDENCE

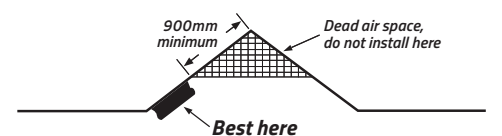
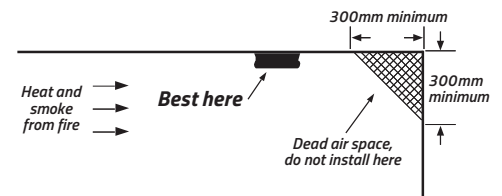
#### KEY:

- Minimum required smoke alarm locations
- Recommended additional smoke alarm locations
- △ Smoke alarms with hush features recommended for additional protection

## RECOMMENDED PLACEMENT OF SMOKE ALARMS

Locate a smoke alarm in any area where a smoker sleeps or where electrical appliances are operated in sleeping areas.

Smoke, heat and other combustion products rise to the ceiling and spread horizontally. Mounting the smoke alarm on the ceiling in the centre of the room places it closest to all the points in the room. Ceiling mounting is preferred in ordinary residential construction. However, in mobile homes, wall mounting on an inside partition is preferred to avoid the thermal barrier that may form in the ceiling.



## IMPORTANT SMOKE ALARM PLACEMENT INFORMATION

1. Place as close as possible to the centre of the ceiling and no closer than 300mm to any wall or corner.
2. Install a smoke alarm in each room that is divided by a partial wall.
3. Install a smoke alarm in lived-in attics or attics which house electrical equipment like furnaces, air conditioners or heaters.

## WHERE NOT TO INSTALL SMOKE ALARMS

1. Areas near appliances or where normal combustion regularly occurs (near furnaces, hot water heaters).
2. In areas with high humidity, like bathrooms, near dishwashers or washing machines. Install at least 3 metres away from these areas.
3. Air returns or heating and cooling supply vents. Install at least 900mm away from these areas. The air could blow smoke away from the detector, interrupting it's alarm.
4. In rooms where temperatures may fall below 5°C or rise above 45° or in rooms where the humidity rises above 85%.
5. In extremely dusty, dirty, or insect-infested areas where loose particles interfere with smoke alarm operation.

**WARNING:** Incorrect orientation will result in a decrease in operational effectiveness.

## INSTALLATION AND MOUNTING INFORMATION

**WARNING:** Smoke alarm installation must be in accordance with the requirements of the national electrical code and any local codes that may apply and performed by a competent person.

**IMPORTANT:** Before installing this smoke alarm ensure that no electrical cabling and or plumbing will interfere with the installation of this smoke alarm. **Use an appropriate fastening system to secure the mounting bracket to the substrate.**

## ACTIVATION

To activate the smoke alarm press the Test button and hold it for at least 3 seconds until RED LED Indicator flashes and release it within 2 seconds. The unit will then generate a beep indicating that it is activated and ready for use. To deactivate this smoke alarm refer to Deactivation section.

## INSTALLATION

1. Turn the alarm body counter clockwise to remove from bracket.
2. Place the mounting bracket on the ceiling surface or wall and use a pencil to mark the position of the mounting holes. Move the mounting bracket and drill the two small holes.
3. Attach the mounting bracket to the ceiling using mounting screws provided to secure it.
4. Remove fixing plug from the bracket with screwdriver if necessary. This fixing plug locks the alarm in place (optional feature).



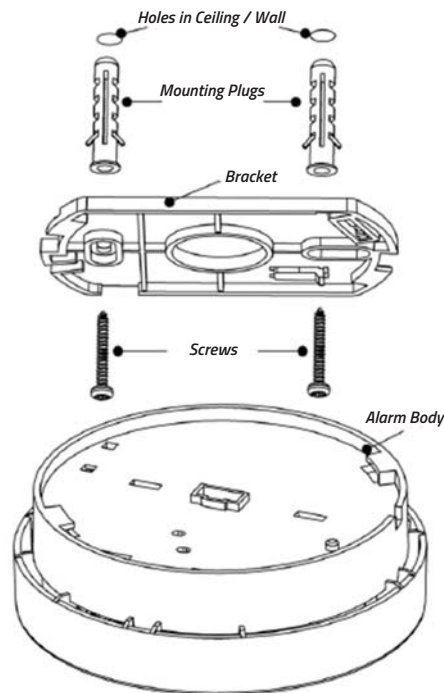
Remove fixing plug with screwdriver

5. Fit the alarm to the bracket by turning the alarm clockwise until it fits securely with the mounting bracket.
6. Insert fixing plug to the gap between the bracket and the bottom cover for fixing the alarm.



7. Press the Test button to test the smoke alarm. For testing instructions refer to Operation, Testing and Maintenance.

## INSTALLATION DIAGRAM



**WARNING:** To prevent injury this unit must be securely attached to the wall or ceiling in accordance to the installation instructions.

## OPERATION, TESTING AND MAINTENANCE

### Normal Operation

When no smoke is present, the RED LED Indicator will flash once every 40 seconds and is an indication that the unit is operating properly.

### Alarm Condition

When the unit detects smoke, the RED LED Indicator will flash once every second and the smoke alarm will sound until particles of combustion (e.g. smoke) clear the photoelectric chamber.

### TESTING

Test the smoke alarm weekly. If the smoke alarm ever fails to test correctly, have it replaced immediately! If the smoke alarm is not working properly, it cannot alert you to a problem.

To test the smoke alarm press the Test button for at least 5 seconds. It should sound 3 beeps with a 1.5 second pause. When the button is released testing will cease. If there is no sound it indicates that the aim could be defective.

**DO NOT** use an open flame to test this smoke alarm. You may ignite and damage the smoke alarm or your home. Stand at arm's length from the smoke alarm when testing.

## RED LED Indicators:

**NORMAL OPERATION:** The RED LED Indicator flashing once every 40 seconds is showing that the smoke alarm is operating properly.

**ALARM:** The RED LED Indicator flashing once every second when the Test button is pressed or when the smoke alarm senses particles of combustion and enters into alarm mode (a constant pulsating sound). **The flashing RED LED Indicator and pulsating alarm will continue until the area is ventilated with clean air or the Test button is released.**

**HUSH MODE:** Is used in a situation where there is a nuisance alarm. **When pressing the Test/Hush button, the alarm will be silenced for approximately 10 minutes.** The RED LED Indicator will flash once every 8 seconds indicating the smoke alarm is in Hush mode. The smoke alarm will automatically reset after approximately 10 minutes.

**If particles of combustion or smoke are still present after the 10 minute hush period the alarm will sound again.** Before hushing smoke alarm identify the source of the smoke and be certain that it is not a fire risk. Dense smoke will override the alarm hush and will sound continuously until clean air vents the area. Using an exhaust or extractor fan while cooking will help minimise nuisance alarms. If the cooking process generates excessive steam and or smoke having a nearby window and or door will constantly vent the area with clean air thereby minimising the possibility of a nuisance alarm.

**LOW BATTERY Indicator:** Occurs when the alarm sounds a chirp together with the RED LED Indicator flashing once every 40 seconds. Pressing the Test button will pause the smoke alarm chirp for 10 hours but then will reset automatically after 10 hours. During this period the alarm chirp is stopped but the smoke alarm is still fully operational.

**NOTE:** This smoke alarm has a non-replaceable 10-year lithium battery. Should the smoke alarm indicate a LOW BATTERY refer to the Troubleshooting section.

**FAULT: Indication is shown when the unit generates a 'chirp' once every 40 seconds.** Pressing the Test button temporarily will pause the 'chirp'. This does not deactivate the alarm only stopping it temporarily for 10 hours. If the incident occurs during the warranty period then return to the place of purchase to arrange a replacement or purchase another smoke alarm. Refer to Troubleshooting section for further assistance.

**WARNING:** If the alarm sounds and the smoke alarm is not being tested, the smoke alarm is sensing smoke. The sound of the alarm requires your immediate attention.

**WARNING: DO NOT** disconnect the battery to silence an unwanted alarm. This will remove your protection. Press the Hush button, ventilate the unit or open a window to allow smoke or dust to clear.

## MAINTENANCE

The smoke alarm is virtually maintenance free. However, under dusty conditions, a vacuum hose may be used to clear dust through the side opening. It is recommended to clean the alarm monthly to maintain the best performance. Normally, the alarm can be operated up to 10 years without replacement. See the replacement date on the bottom of the alarm unit. **DO NOT** attempt to remove the cover to clean inside the smoke alarm. This will void your warranty.

**NOTE:** If a nuisance alarm occurs and if there is no sign of smoke, heat or noise to suggest a fire you should get your family to a safe place before investigating. Check the household carefully in case there is a small fire smouldering out of sight, or if there is another source of smoke or fumes such as cooking fumes being drawn past a smoke alarm by an extractor.

**WARNING:** If there are frequent nuisance alarms it may be necessary to re-locate the device away from the source of the fumes. If the alarm continues sounding nuisance alarms without smoke or heat being present it may require some maintenance or cleaning.

## SMOKE ALARM REPLACEMENT

It is recommended that this smoke alarm should be replaced 10 years from the date of manufacture. This date has been provided on the product label which is located on the back of the smoke alarm.

## BATTERY REPLACEMENT

The battery in this smoke alarm is sealed within the unit and cannot be removed. Should there be a low battery (if within warranty period) have the smoke alarm replaced or purchase a new unit.

## DEACTIVATING THE SMOKE ALARM

Press the Test button and hold it for more than 10 seconds until the **RED LED Indicator** flashes rapidly (flashes 5 times per second), then press the Test button rapidly at least 6 times within 5 seconds. The unit will generate a 'beep' indicating the smoke alarm is in an inactive status. To reactivate refer to installation instructions.

## TROUBLESHOOTING

### Problem 1

The smoke alarm does not sound when the Test button is pressed.

### Remedy 1

Ensure the smoke alarm has been activated correctly according to the Installation Instructions. Should the smoke alarm not respond clean it (refer to Maintenance and Cleaning). If after performing the first two steps, the smoke alarm remains unresponsive return it to the place of purchase (only during warranty period) or purchase another smoke alarm.

### Problem 2

The RED LED Indicator of the smoke alarm flashes once every 40 seconds and 'chirps.'

### Remedy 2

The smoke alarm is indicating a LOW BATTERY. Return to point of purchase for replacement (only during warranty period) or purchase a new smoke alarm.

### Problem 3

The smoke alarm 'chirps' occurs every 40 seconds (FAULT mode).

### Remedy 3

Maintain and Clean the smoke alarm according to the Maintenance and Cleaning Instructions. If after this process the smoke alarm chirp remains, return the smoke alarm to place of purchase (only during warranty period) or purchase a new smoke alarm.

### Problem 4

The smoke alarm device sounds unwanted alarms intermittently or when residents e.g. cooking or showering.

### Remedy 4

Clean the smoke alarm according to instructions in Maintenance section. If after cleaning the smoke alarm continues to sound unwanted alarms it should be moved further away from the trigger (e.g. stove or shower). If the smoke alarm continues to sound unwanted or nuisance alarms intermittently and has been moved further away from the trigger replace the smoke alarm (only during the warranty period) or purchase another smoke alarm.

### Problem 5

The smoke alarm sounds different from the usual sound pattern.

### Remedy 5

Clean the smoke alarm according to instructions in Maintenance section. If after cleaning the smoke alarm continues to sound incorrectly (either in normal operation, testing or alarm mode) replace the smoke alarm (only during warranty period) or purchase another smoke alarm.

**NOTE:** If the smoke alarm fails to operate correctly the advice of the supplier should be sought.

## WHAT TO DO IN CASE OF A FIRE

- If there is a fire in your home, the precautions described will increase your chance of escaping safely. The following rules should always be highlighted during fire drills so that they are remembered in the case of a real emergency.
- Stay calm and think clearly about the pre-arranged escape plan.
- Leaving the house as soon as possible following the planned escape route. Do not stop to collect personal belongings.
- Check doors to see if they are hot. If the door is hot, do not open it - use another escape route.
- Keep all doors and windows shut, only open as a means of escaping.
- Smoke rises, so keep close to the floor - if necessary crawl.
- Take short breaths and if possible, cover your mouth and nose with a wet cloth.
- Make your way to the pre-arranged meeting point and call the fire brigade. Give your full name and address.
- Never re-enter a burning house. For further information on fire safety and prevention, contact your local fire prevention officer.

In an  
emergency dial:  
Australia

**000**

New Zealand

**111**

[www.family-first.com.au](http://www.family-first.com.au)

**WARNING: DO NOT** try to disassemble this smoke alarm, as it may damage or impede the operation. No user serviceable parts inside. The warranty will become void if misuse or abuse is apparent. This 10 year warranty is also conditional on this unit being installed in accordance with local building codes.

## 10 YEAR WARRANTY

The smoke alarm is warranted to be free from defects in materials and workmanship for ten (10) years from the date of purchase and is not transferable under normal use. The warranty does not cover natural disasters such as fire, flood, hurricanes and tornados. Warranty is conditional on the smoke alarm being used in the normal way and not being modified or subject to attempted repairs or contamination.

The warranty excludes incidental and consequential damages. Your statutory rights as a consumer are in no way compromised by this warranty. Master Distributors Pty Ltd agrees to repair or replace, at its option, any defective smoke alarm provided it is returned personally or by prepaid delivery with a copy of proof of purchase. This warranty does not cover damages resulting from lack of reasonable care of the product.

*Our goods come with guarantees that cannot be excluded under the Australian Consumer Law. You are entitled to a replacement or refund for a major failure and for compensation for any other reasonably foreseeable loss or damage. You are also entitled to have the goods repaired or replaced if the goods fail to be of acceptable quality and the failure does not amount to a major failure.* Subject to those non-excluded rights and provisions and the above warranty, Master Distributors Pty Ltd will not be liable for injury to persons, damage to property, or for any direct or indirect or consequential damage as a result of negligence or fault on the part of Master Distributors Pty Ltd or it's servants, agents, suppliers and contractors or otherwise arising out of or resulting from, whether directly or indirectly, the use, installation or maintenance of the smoke alarm and any warranties or representations are excluded unless given by Master Distributors Pty Ltd in writing. Please leave this document, or a copy, for the end user.

**TEST ALARM**  
YOUR FREE TEST ALERT SERVICE

REGISTER ONLINE AT [TESTALARM.COM.AU](http://TESTALARM.COM.AU)

Test Alarm is a convenient free reminder service to let you know when your smoke alarm and other fire protection products are due for testing or need to be replaced.

All smoke alarms (smoke detectors), fire extinguishers and fire blankets have limited lives, must be tested and checked regularly, and replaced eventually. Thanks to Test Alarm smoke alarm reminder service, you can be reminded to do all those tests and keep yourself and your family safe.

Test Alarm will send you an e-mail notification (as often as you nominate) to remind you that testing and checking must be performed. You may choose to opt-out at any time, however maintaining your subscription with Test Alarm reminders will help you keep your family safe.

VISIT [www.testalarm.com.au](http://www.testalarm.com.au)

Please dispose of product packaging thoughtfully.



31 Dunlop Road Mulgrave Victoria 3170  
Ph 03 9538 9200 Fax 03 9538 9299  
sales@masterdistributors.com.au  
www.masterdistributors.com.au