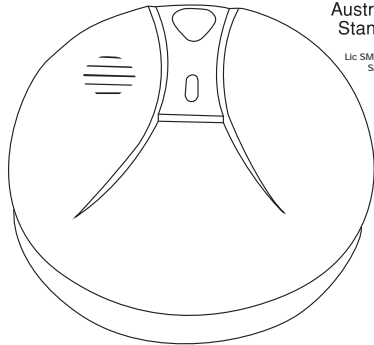


Protect your Family First

PRODUCT MANUAL FFP9VH10Y2

PHOTOELECTRIC SMOKE ALARM WITH 9 VOLT 10 YEAR LITHIUM BATTERY & TEST & HUSH BUTTON



SPECIFICATIONS:

Detection Type	Photoelectric Chamber
Power Source	9V Lithium 10 Year Sealed Battery
Standby Current	15uA max
Alarm Current	30mA max
Alarm Sound Level	85 Decibels at 3 metres
Operation Temperature	5°C to 45°C
Ambient Humidity	10% to 90%
Sensitivity to Smoke	3.0 - 30.0% Obs/m
Compact Size	110mm diameter

FEATURES:

DC operated photoelectric type smoke alarm
Photoelectric sensor for slow smouldering fires
Insect proof
Test & Hush button
Environmentally friendly non-radioactive technology
High and stable sensitivity
Quick fix mounting bracket for easy installation
Fitting and battery tamper-resist feature
LED operation indicator
Extra loud alarm sound over 85 dB
Low-battery and battery missing warning indicators
Auto reset when smoke clears

IMPORTANT: This manual contains important information about the installation and operation of your smoke alarm. Please read carefully before installation and keep for future reference. Please ensure that this leaflet remains in the household where the alarm is installed.

WARNING: This smoke alarm is designed to alert you to the presence of smoke. It cannot prevent a fire. There are hazards against which smoke alarms may not be effective such as smoking in bed, explosions, etc. The ultimate responsibility for fire protection rests with you. This responsibility includes escape planning, safety checks and an effective warning system. In case of fire, a well placed, properly looked after smoke alarm may provide a few seconds so that you can escape and call the fire brigade.

IMPORTANT SAFETY INFORMATION

1. This smoke alarm has an inbuilt Lithium battery that does not require servicing or changing. This battery is a 10 year maintenance free battery that is not accessible to the user. This battery must be operational to operate the alarm correctly. To test

the battery press the test button on this smoke alarm.

2. DO NOT connect this smoke alarm to any other type of smoke alarm or auxiliary device, except those listed in this manual. The test button accurately tests all smoke alarm functions. DO NOT use any other test method. Test smoke alarm weekly to ensure proper operation.

3. DO NOT remove or disconnect battery to silence unwanted alarms. This will remove your protection. Press hush button or open windows to ventilate the smoke alarm to silence it.

4. This smoke alarm may be installed by a licensed, qualified electrician. Observe and follow all local and national electrical and building codes for installation.

5. This smoke alarm is designed to be used inside a single unit dwelling only. In buildings with several dwellings, each individual living unit should have its own smoke alarms. DO NOT install in non-residential buildings. This smoke alarm is not a substitute for a complete alarm system.

6. Install a smoke alarm in every room and on every level of the home. Smoke may not reach the smoke alarm for many reasons. For example, if a fire starts in a remote part of the home, on another level, in a chimney, wall, roof or on the other side of a closed door, smoke may not reach the smoke alarm in time to alert household members. A smoke alarm will not promptly detect a fire except in the area or room in which it is installed.

7. Smoke alarms may not alert every household member every time. The alarm sound is loud in order to alert individuals to a potential danger. However, there may be limiting circumstances where a household member may not hear the alarm (i.e. outdoor or indoor noise, sound sleepers, drug or alcohol usage, hard of hearing, etc.). If you suspect that this smoke alarm may not alert household members, install and maintain specialty alarms. Household members must hear the alarm's warning sound and respond, to quickly reduce the risk of damage, injury or death that may result from fire. If a household member is hearing impaired, install special smoke alarms with lights or vibrating devices to alert occupants.

8. Smoke alarms can only sound their alarms when they detect smoke. Smoke alarms detect combustion particles in the air. They do not sense heat, flame or gas. This smoke alarm is designed to give an audible warning of a developing fire. However, many fires are fast burning, explosive or intentional. Others are caused by carelessness or safety hazards. Smoke may not reach the smoke alarm quickly enough to ensure safe escape.

9. Smoke alarms have limitations. This smoke alarm is not foolproof and is not warranted to protect lives or property from fire. Smoke alarms are not a substitute for insurance. Homeowners and renters should insure their lives and property. In addition, it is possible for the smoke alarm to fail at any time. For this reason, you must test the smoke alarm weekly and replace every 10 years.

NOTE: For best protection, we recommend that you install a smoke alarm in every room.

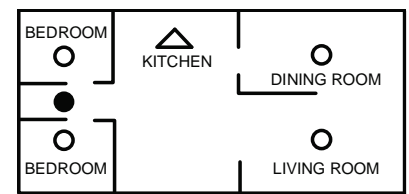
WHERE TO INSTALL YOUR ALARM

For best safety, install smoke alarms in every room: Including hall, bedrooms, living rooms, attics & basement. At the very least, install one smoke alarm on every floor.

SMOKE ALARM PLACEMENT

Typical single-storey home

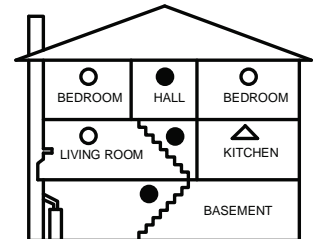
Install a smoke alarm on the ceiling or wall inside each bedroom and in the hallway outside each separate sleeping area. If a bedroom area or hallway is more than 9 metres long, install a smoke alarm at each end. If there is a basement, install a smoke alarm on the basement ceiling at the bottom of the stairwell.



SINGLE-STOREY RESIDENCE, APARTMENT, MOBILE HOME

Typical multi-storey or split level home

Install a smoke alarm on the ceiling or wall inside each bedroom and in the hallway outside each separate sleeping area. If a bedroom area or hallway is more than 9 metres long, install a smoke alarm at each end. Please install a smoke alarm on the top of a first-to-second floor stairwell.



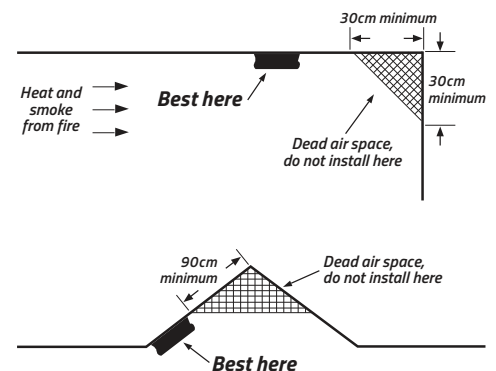
MULTI-STOREY RESIDENCE

KEY:

- Minimum required smoke alarm locations
- Recommended additional smoke alarm locations
- △ Smoke alarms with hush features recommended for additional protection

IMPORTANT SMOKE ALARM PLACEMENT AND EXCEPTION INFORMATION

- Place as close as possible to the centre of the ceiling as possible or at least no closer than 30cm to any wall or corner.
- Install a smoke alarm in each room that is divided by a partial wall.
- Install a smoke alarm in lived-in attics or attics which house electrical equipment like furnaces, air conditioners or heaters.



DO NOT INSTALL SMOKE ALARMS

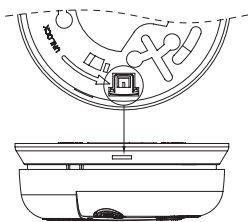
- Areas near appliances or where normal combustion regularly occurs (near furnaces, hot water heaters).
- In areas with high humidity, like bathrooms, near dishwashers or washing machines. Install at least 3 metres away from these areas.
- Air returns or heating and cooling supply vents. Install at least 900mm away from these areas. The air could blow smoke away from the detector, interrupting its alarm.
- In rooms where temperatures may fall below 5°C or rise above 45°C.
- In extremely dusty, dirty, or insect-infested areas where loose particles interfere with smoke alarm operation.

WARNING: Incorrect orientation will result in a decrease in operational effectiveness.

INSTALLATION AND MOUNTING INFORMATION

WARNING: Smoke alarm installation must be in accordance with the requirements of the national electrical code and any local codes that may apply and by a competent person.

1. From back of the smoke alarm, remove the mounting plate by turning it counterclockwise. (To later engage tamper-resist feature, twist out and set aside one of the pins moulded into plate. Both pins are exactly the same).



2. Position smoke alarm to mounting plate and turn clockwise to lock into place. To engage tamper-resist feature, insert pin into notch and edge of smoke alarm after alarm is properly positioned in base.

3. Push test button to test smoke alarm. See OPERATION, TESTING AND MAINTENANCE.

OPERATION, TESTING AND MAINTENANCE

Operation

Normal Operation When no smoke is present, a red LED indicator will flash ONCE A MINUTE and is an indication that the unit is operating properly.

The hush feature can mute the detector if it has been inadvertently triggered by holding down the test/hush button for a few seconds. The smoke alarm will be muted for 10 minutes and then reset into normal mode after this period.

NOTE: If the smoke density increases during the hush period the smoke alarm will be triggered into sounding again.

Alarm Condition

When the unit detects smoke, the red LED indicator will flash rapidly and alarm will sound loudly until the air is clear.

Testing the Smoke Alarm

Test the smoke alarm once a week. If the smoke alarm ever fails to test correctly, have it replaced immediately! If the smoke alarm is not working properly, it cannot alert you to a problem.

1. Test each smoke alarm to be sure it is installed correctly and operating properly.
2. The push-to-test button accurately tests functions. DO NOT use an open flame to test this smoke alarm. You may ignite and damage the smoke alarm or your home.
3. Stand at arm's length from the smoke alarm when testing.
4. To test the smoke alarm firmly press the test button, and the alarm will sound a loud beep. The alarm will stop sounding after releasing the test button. If the alarm does not sound please re-test the alarm.

WARNING: If the alarm sounds and the smoke alarm is not being tested, the smoke alarm is sensing smoke. The sound of the alarm requires your immediate attention and action.

Maintenance

The smoke alarm is virtually maintenance free. However, under dusty conditions, a vacuum hose may be used to clear dust through the side opening. It is recommended to clean the alarm monthly to keep best performance. Normally, the alarm can be operated up to 10 years without replacement. See the replacing date on the bottom of the alarm unit. DO NOT attempt to remove the cover to clean inside the smoke alarm. This will void your warranty.

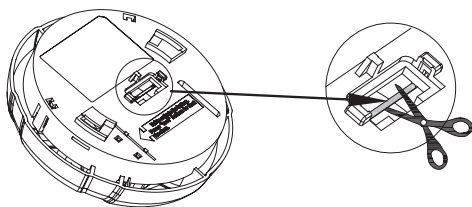
HUSH FEATURE

This smoke alarm is equipped with a combined test & hush button to help control nuisance alarms. If there is a nuisance alarm simply press the test/hush button to silence the unit for 10 minutes. The unit will flash a red LED every 10 seconds (instead of the normal 40 seconds) to indicate the sensitivity has been reduced. The unit will reset to normal sensitivity at the end of the hush period. If additional hush time is required, simply push the test/hush button again.

NOTE: If a nuisance alarm occurs and if there is no sign of smoke, heat or noise to suggest a fire you should get your family to a safe place before investigating. Check the household carefully in case there is a small fire smouldering out of sight, or if there is another source of smoke or fumes such as cooking fumes being drawn past a smoke alarm by an extractor.

WARNING: If there are frequent nuisance alarms it may be necessary to re-locate the device away from the source of the fumes. If the alarm continues sounding nuisance alarms without smoke or heat being present;

- It may require some maintenance or cleaning (See Maintenance above), or;
- The smoke alarm can be permanently disabled by cutting the red wire at the back of the smoke alarm as indicated in the diagram below.



If this action is taken the smoke alarm must be replaced.

BATTERY REPLACEMENT

Battery replacement is not required and the battery cannot be removed.

WHAT TO DO IN CASE OF A FIRE

- If there is a fire in your home, the precautions described will increase your chance of escaping safely. The following rules should always be highlighted during fire drills so that they are remembered in the case of a real emergency.
- Stay calm and think clearly about the pre-arranged escape plan.
- Leaving the house as soon as possible following the planned escape route. Do not stop to collect personal belongings.
- Check doors to see if they are hot. If the door is hot, do not open it - use another escape route.
- Keep all doors and windows shut, only open as a means of escaping.
- Smoke rises, so keep close to the floor - if necessary crawl.
- Take short breaths and if possible, cover your mouth and nose with a wet cloth.
- Make your way to the pre-arranged meeting point and call the fire brigade. Give your full name and address.
- Never re-enter a burning house. For further information on fire safety and prevention, contact your local fire prevention officer.

WARNING: Do not try to disassemble this smoke alarm, as it may damage or impede the operation. No user serviceable parts inside. The warranty will become void if misuse or abuse is apparent.

10 YEAR WARRANTY

The smoke alarm is warranted to be free from defects in materials and workmanship for ten (10) years from the date of purchase and is not

transferable under normal use. The warranty does not cover natural disasters such as fire, flood, hurricanes and tornados. Warranty is conditional on the smoke alarm being used in the normal way and not being modified or subject to attempted repairs or contamination. The warranty excludes the battery, incidental and consequential damages. Your statutory rights as a consumer are in no way compromised by this warranty. Master Distributors Pty Ltd agrees to repair or replace, at its option, any defective smoke alarm provided it is returned personally or by prepaid delivery with a copy of proof of purchase. This warranty does not cover damages resulting from lack of reasonable care of the product.

Our goods come with guarantees that cannot be excluded under the Australian Consumer Law. You are entitled to a replacement or refund for a major failure and for compensation for any other reasonably foreseeable loss or damage. You are also entitled to have the goods repaired or replaced if the goods fail to be of acceptable quality and the failure does not amount to a major failure.

Subject to those non-excluded rights and provisions and the above warranty, Master Distributors Pty Ltd will not be liable for injury to persons, damage to property, or for any direct or indirect or consequential damage as a result of negligence or fault on the part of Master Distributors Pty Ltd or its servants, agents, suppliers and contractors or otherwise arising out of or resulting from, whether directly or indirectly, the use, installation or maintenance of the smoke alarm and any warranties or representations are excluded unless given by Master Distributors Pty Ltd in writing. Please leave this document, or a copy, for the end user.

FOR MORE INFORMATION AND FAQ PLEASE VISIT WWW.FAMILY-FIRST.COM.AU



31 Dunlop Road Mulgrave Victoria 3170
Ph 03 9538 9200 Fax 03 9538 9299
sales@masterdistributors.com.au
www.masterdistributors.com.au