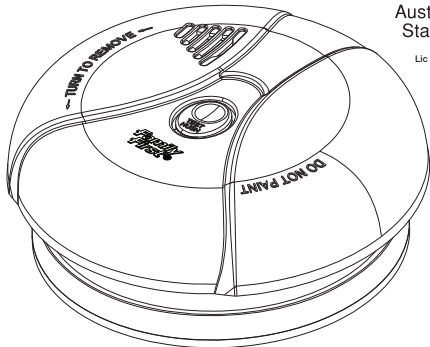


Protect your Family First

PRODUCT MANUAL FFP240VHX

230 - 240VAC 50 Hz, 36mA
PHOTOELECTRIC SMOKE ALARM
WITH 9 VOLT BATTERY BACKUP &
TEST/HUSH BUTTON

SUITABLE FOR SINGLE (STAND ALONE)
OR INTERCONNECTED USE



ELECTRICAL RATING:

MAINS POWER

Operating voltage: 230-240VAC, 50Hz
Operating current (Max.): 36mA

BACKUP BATTERY

Operating voltage (Max.): 9V DC
Operating current (Max.): 20mA
Battery type: 6F22

IMPORTANT: This manual contains important information about the installation and operation of your smoke alarm. Please read carefully before installation and keep for future reference. Please ensure that this leaflet remains in the household where the alarm is installed.

WARNING: This smoke alarm is designed to alert you to the presence of smoke. It cannot prevent a fire. There are hazards against which smoke alarms may not be effective such as smoking in bed, explosions, etc. The ultimate responsibility for fire protection rests with you. This responsibility includes escape planning, safety checks, and an effective warning system. In case of fire, a well placed, properly looked after smoke alarm may provide a few seconds so that you can escape and call the fire brigade.

LIMITATIONS: Loss of AC power will render this smoke alarm inoperative unless a 9V battery is installed in the unit. Never install a smoke detector where temperatures are less than 5°C or more than 45°C or above 90% relative humidity level. Never paint the smoke alarm. This smoke alarm has a service life of ten years under normal use. We recommend you replace it within no more than ten years to ensure maximum protection. A smoke detector is not a substitute for insurance. You should obtain and maintain insurance on your home and property.

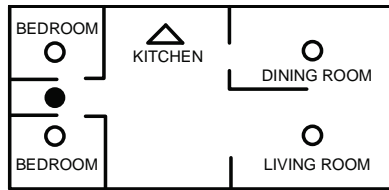
WHERE TO INSTALL YOUR ALARM

For best safety, install smoke alarms in every room: Including hallways, bedrooms, living rooms, attics & basement. At the very least, one smoke alarm on every floor.

SMOKE ALARM PLACEMENT

Typical single-storey home

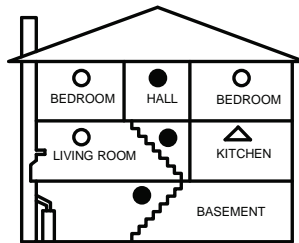
Install a smoke alarm on the ceiling or wall inside each bedroom and in the hallway outside each separate sleeping area. If a bedroom area or hallway is more than 9 metres (30 feet) long, install a smoke alarm at each end. If there is a basement, install a smoke alarm on the basement ceiling at the bottom of the stairwell.



SINGLE-STOREY RESIDENCE, APARTMENT, MOBILE HOME

Typical Multi-storey or split level home

Install a smoke alarm on the ceiling or wall inside each bedroom and in the hallway outside each separate sleeping area. If a bedroom area or hallway is more than 9 metres (30ft) long, install a smoke alarm at each end. Please install a smoke alarm on the top of a first-to-second floor stairwell.



MULTI-STOREY RESIDENCE

KEY:

- Minimum required smoke alarm locations
- Recommended additional smoke alarm locations
- △ Smoke alarms with hush features recommended for additional protection

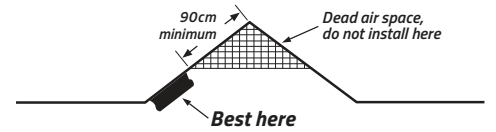
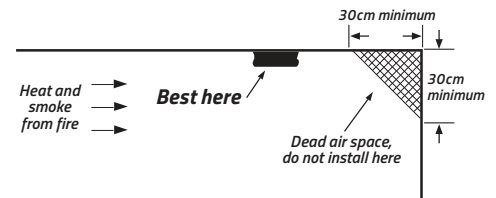
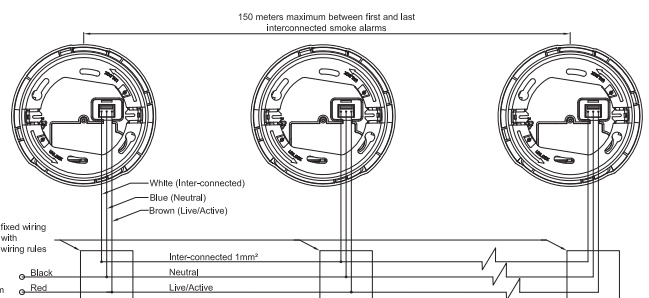
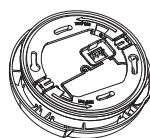
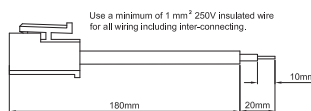
RECOMMENDED PLACEMENT OF SMOKE ALARMS

Locate a smoke alarm in any area where a smoker sleeps or where electrical appliances are operated in sleeping areas.

Smoke, heat and other combustion products rise to the ceiling and spread horizontally. Mounting the smoke alarm on the ceiling in the centre of the room places it closest to all the points in the room. Ceiling mounting is preferred in ordinary residential construction. However, in mobile homes, wall mounting on an inside partition is preferred to avoid the thermal barrier that may form in the ceiling.

IMPORTANT SMOKE ALARM PLACEMENT INFORMATION

1. Place as close as possible to the centre of the ceiling and no closer than 300mm to any wall or corner.
2. Install a smoke alarm in each room that is divided by a partial wall.
3. Install a smoke alarm in lived-in attics or attics which house electrical equipment like furnaces, air conditioners, or heaters.



DO NOT INSTALL SMOKE ALARMS

1. In areas near appliances or where normal combustion regularly occurs (near furnaces, hot water heaters).
2. In areas with high humidity like bathrooms, near dishwashers or washing machines. Install at least 3 metres (10 feet) away from these areas.
3. In air returns or heating and cooling supply vents. Install at least 900mm (3 feet) away from these areas. The air could blow smoke away from the detector, interrupting its alarm.
4. In rooms where temperatures may fall below 5°C or rise above 45°C.
5. In extremely dusty, dirty, or insect-infested areas where loose particles interfere with smoke alarm operation.

WARNING: Incorrect orientation will result in a decrease in operational effectiveness.

INSTALLATION AND MOUNTING INFORMATION

IMPORTANT: This alarm must be installed by a licensed electrician!

- The smoke alarm will function correctly either stand alone or inter-connected.
- All inter-connected smoke alarms must be supplied from a single power circuit.
- DO NOT connect white inter-connection wire to live or neutral.
- DO NOT connect the smoke alarm to a circuit protected by a Residual Current Device.
- Connect and power the smoke alarm with 230-240VAC only.

Solid wires with 1mm² (or larger) cross-sectional area are recommended for power supply and inter-connection. Strip the live, neutral and inter-connection wires back to the length of 10mm. Connect the flying lead wiring to the fixed wiring in accordance with the requirements of AS/NZS 3000. The colours of the wires are: live = brown, neutral = blue and inter-connect = white.

Further note for qualified electrician: Secure the flying lead by stripping the individual conductor insulation back 10 mm from the phase (brown), neutral (blue) and white (I/O) wiring and then terminate it to the screw terminal in the junction box provided (with the I/O wiring terminated to the central screw terminal). Secure the fixed wiring phase, neutral and I/O wiring to the corresponding screw terminals in the junction box. The outer heatshrink tubing on the flying lead is to be taken into the junction box.

The smoke alarms can be inter-connected as many as 20 units in series. Check the connections. Incorrect connection may damage the units.

Your smoke alarm is designed for easy mounting on walls or ceilings.

Place the mounting bracket on the ceiling surface or wall and use a pencil to mark the position of the mounting holes and the hole through which to bring the electrical wiring to the smoke alarm. Move the mounting bracket and drill the two small holes and the larger hole. Use a fastening system suitable for the substrate to secure the mounting bracket.

Insert a 9V DC battery. Rotate the alarm to wall mount tightly. The alarm cannot be secured if the battery is not installed properly.

The red LED will then flash once each 40 seconds. Press the TEST button to check that each alarm works and inter-connected alarms work. Inter-connected alarms must all be individually checked. Do not finalise the installation until all alarms have been checked for correct operation.

During the power up of the unit, several 'beep' alarms may sound. This is normal operation for the unit.

WARNING: DO NOT CONNECT TO OTHER INCOMPATIBLE SMOKE ALARMS.

OPERATION, TESTING AND MAINTENANCE

Operation

The smoke alarm is operating once the power is connected and turned on (the battery must also be installed). When combustion products are sensed, the unit sounds a loud alarm which continues until the air is cleared.

False Alarm (Hush function)

Units with the 'hush' feature have the capability of temporarily reducing the sensitivity of the alarm circuit for approximately 10 minutes. This feature is to be used only when a known smoke alarm condition, such as smoke from cooking, activates the smoke alarm. The smoke alarm is deactivated by pushing the hush button on the smoke alarm once. The smoke alarm will automatically reduce sensitivity and the red indicator will flash more frequently for approximately 10 minutes to indicate that the alarm is in the temporary silent condition. The alarm sensitivity will reset to normal after 10 minutes and sound the alarm if combustion particles are still present. The 'hush' feature may be used repeatedly until the air has cleared.

CAUTION: Before using the alarm's 'hush' feature, identify the source of the smoke and be certain that safe conditions exist.

Testing

Test by pressing the test button on the smoke alarm cover for at least 4 seconds, until the alarm sounds. It activates the self-test program and the alarm sounds if all the electronic circuitry, horn and battery are working. When any single smoke alarm is tested, all inter-connected units should sound an alarm. It is highly recommended that the alarm be tested weekly to ensure it is operating correctly. If no alarm sounds on test, the unit may have a defective battery. Replace the battery with a new one and repeat the test. If it still does not operate then the unit is defective and should be replaced. You can also test the alarm by blowing smoke into the unit.

PLEASE DISPOSE OF THE BAD OR DISCHARGED BATTERIES IN ACCORDANCE WITH LOCAL REGULATIONS TO PROTECT THE ENVIRONMENT.

Maintenance

The smoke alarm is virtually maintenance free. However, under dusty conditions, a vacuum hose may be used to clear dust through the side opening. It is recommended you clean the alarm monthly to keep best performance. Normally, the alarm can be operated up to 10 years without replacement. See the replacement date on the

bottom of the alarm unit.

BATTERY REPLACEMENT

The power of this smoke alarm is backed up by one 9V DC battery. The battery should last for at least 1 year under normal operating conditions. The smoke alarm has a low battery indicator, an audible 'chirp'. It will operate at 30-40 second intervals for a minimum of 7 days. Replace the battery when this indication occurs. Only the following 9V DC batteries (which are available at hardware or electronic parts stores) may be used for replacement.

Gold Peak GP1604S

Eveready 1222

Varta 04922

CAUTION: Switch off smoke alarm before removing smoke alarm for battery replacement.

To replace the battery, you must:

1. Disconnect mains power from the smoke detectors.
2. Rotate the smoke detector off the locking ring.
3. Remove mains power from the smoke detector by removing the mains connector.
4. Remove the screw from the battery cover and DO NOT misplace it.
5. Replace the battery.
6. Replace the original screw in the battery cover.
7. Fit the mains connector to the smoke detector.
8. Rotate it back into the locking ring.
9. Reconnect mains power.

WHAT TO DO IN CASE OF A FIRE

- If there is a fire in your home, the precautions described will increase your chance of escaping safely. The following rules should always be highlighted during fire drills so that they are remembered in the case of a real emergency.
- Stay calm and think clearly about the pre-arranged escape plan.
- Leaving the house as soon as possible following the planned escape route. Do not stop to collect personal belongings.
- Check doors to see if they are hot. If the door is hot, do not open it - use another escape route.
- Keep all doors and windows shut, only open as a means of escaping.
- Smoke rises, so keep close to the floor - if necessary crawl.
- Take short breaths and if possible, cover your mouth and nose with a wet cloth.
- Make your way to the pre-arranged meeting point and call the fire brigade. Give your full name and address.
- Never re-enter a burning house. For further information on fire safety and prevention, contact your local fire prevention officer.

WARNING: Do not try to disassemble this smoke alarm, as it may damage or impede its operation. No user serviceable parts inside. The warranty will become void if misuse or abuse is apparent. This 10 year warranty is also conditional on this unit being installed by a licensed electrical contractor in accordance with local building codes.

10 YEAR WARRANTY

The smoke alarm is warranted to be free from defects in materials and workmanship for ten (10) years from the date of purchase and is not transferable under normal use. The warranty does not cover natural disasters such as fire, flood, hurricanes and tornadoes. The warranty only applies if the smoke alarm is installed by a licensed electrical contractor in accordance with local regulations, is used in the normal way and is serviced regularly. The warranty is also conditional on the smoke alarm not being modified or subject

to attempted repairs or contamination. The warranty excludes the battery, incidental and consequential damages. Your statutory rights as a consumer are in no way compromised by this warranty. Master Distributors Pty Ltd agrees to repair or replace, at its option, any defective smoke alarm provided it is returned personally or by prepaid delivery with a copy of proof of purchase. This warranty does not cover damages resulting from lack of reasonable care of the product.

Our goods come with guarantees that cannot be excluded under the Australian Consumer Law. You are entitled to a replacement or refund for a major failure and for compensation for any other reasonably foreseeable loss or damage. You are also entitled to have the goods repaired or replaced if the goods fail to be of acceptable quality and the failure does not amount to a major failure.

Subject to those non-excluded rights and provisions and the above warranty, Master Distributors Pty Ltd will not be liable for injury to persons, damage to property, or for any direct or indirect or consequential damage as a result of negligence or fault on the part of Master Distributors Pty Ltd or its servants, agents, suppliers and contractors or otherwise arising out of or resulting from, whether directly or indirectly, the use, installation or maintenance of the smoke alarm and any warranties or representations are excluded unless given by Master Distributors Pty Ltd in writing. Please leave this document, or a copy, for the end user.

FOR MORE INFORMATION AND FAQ PLEASE VISIT WWW.FAMILY-FIRST.COM.AU

Please dispose of product packaging thoughtfully.



31 Dunlop Road Mulgrave Victoria 3170
Ph 03 9538 9200 Fax 03 9538 9299
sales@masterdistributors.com.au
www.masterdistributors.com.au